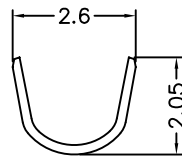
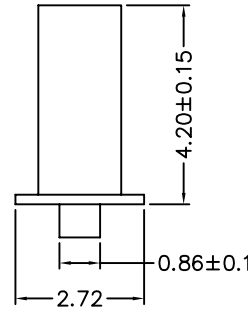


A-A SEC



B-B SEC



C-C SEC

Specifications

- Voltage Rating: 250V AC/DC
- Current Rating: 5A AC/DC
- Contact Resistance: 20mΩmax.
- Withstanding Voltage: 1500V AC/minute.
- Insulation Resistance: 1000MΩ min.
- Temperature Range: -25°C~+85°C

TERMINAL

- Applicate Wires: AWG#18-24
- Material: Brass
- Finish: Tin Plated

731-7 0 - T00008
1 2 3

- 1. 7: Green Product
- 2. 0: 3961T
- 3. Pinrex internal code.

		TOLERANCE				OLD PART NO.		TITLE	
		.0 =±.30		UNITS : mm		DRAWER		MOLEX 3.96mm TERMINAL	
		.00 =±.20		SCALE NONE		CHECK			
B		REVISE DIMENSIONS & DESCRIPTION		SIZE A4		SHEET 1 OF 1		NEW PART NO.	
		RELEASE		ANG.=±3'		REV. B		731-70-T00008	
REV.		DESCRIPTION		DATE		APP'D		731-70-T00008(B版)	
		2010/02/23							
		2006/04/17							